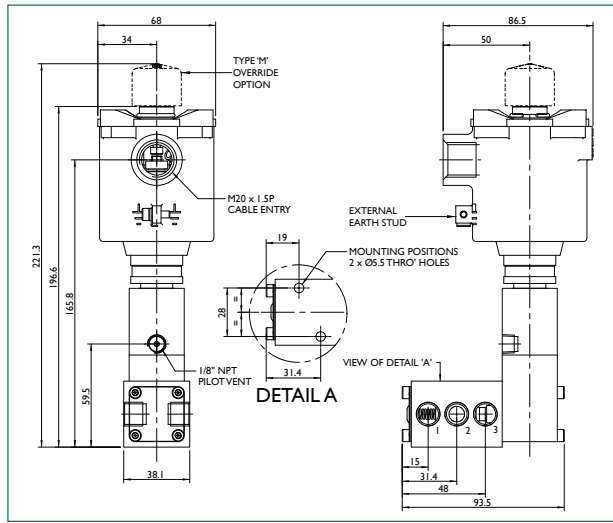


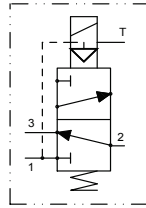
SJ06



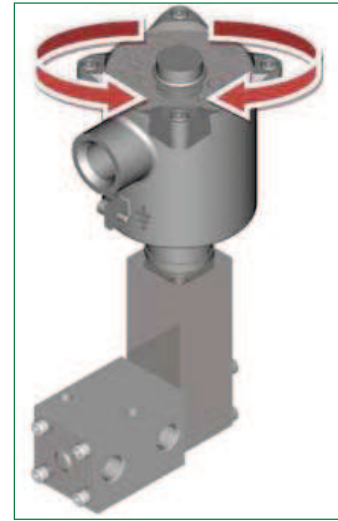
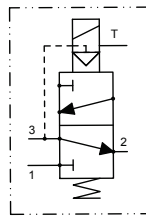
Dimensional Drawings



SCHEMATIC 3/2 NC



SCHEMATIC 3/2 NO



SJ06 Selection Chart - Ordering Example

SJ06	1/4" NPT		Model Code
ASJ06	1/4" NPT Low Temperature		
E1	Internal Pilot - Auto Reset	E4	External Pilot - Manual Override
E2	External Pilot - Auto Reset	E5	Manual reset - Electrical AND manual required to latch OR temporary manual override
E3	Manual Override - Electrical to switch OR temporary manual override	E6	External Pilot - Manual Reset
132	3-way, 2-position		Valve Configuration
NC	Normally closed		
NO	Normally open		
00	Spring return end cap	03	Spring cap with mechanical latch
02	Spring cap with microswitch plunger	E1	Internal Pilot
XX	Refer to Solenoid options tables.	74 (Ex emb) Page 11 - Table 1 77 (Ex d) Page 12 - Table 2 78 (Ex ia) Page 13 - Table 3	Solenoid * **
A	ATEX/IECEx Dual Certified/Labelled	74(Ex emb) 77(Ex d) 78(Ex ia)	Solenoid Approval
G	GOST	✓ ✓ ✓	
I	INMETRO	X ✓ ✓	
N	NEPSI*	X ✓ X	
U	CSA (US) ATEX Dual Certified/Labelled	X ✓ X	
3	T4 IIC 77 (Ex d), 78 (Ex ia)	See 'T' Rating Limitations for Ex emb, Ex d & Ex ia on pages 11, 12 & 13.	T-Rating & Gas Group
6	T5 IIC 77 (Ex d)		
9	T6 IIC 77 (Ex d), 78 (Ex ia)		
XXX	Voltage, refer to Solenoid option tables	74 (Ex emb) Page 11 - Table 1 77 (Ex d) Page 12 - Table 2	Voltage
M	Electrical to switch or temporary manual override		Options
ML	Electrical and manual required to latch or temporary manual override (3.0 Watts Ex d Only)		
MLT	Electrical and manual required to latch - tamperproof		
XX	Power (W)	74 (Ex emb) - 1.8 & 3.6Watts Page 11-Table 1 77 (Ex d) - 1.5 & 3.0Watts Page 12-Table 2	Power
XX	Resistance (Ω)	78 (Ex ia) - 370 Ohms Page 13 - Table 3	Resistance
K6	BSPF Ports		Option
K85	1/2" NPT conduit entry		Option
XX			Revision Number
SJ06 - E1 - 32 - NC - 00 - 77 A 9 - 24D - ML - 30 - K6 - K85 - XX			Ordering Example

For green block sections, please refer to the same colour section on pages 11, 12 or 13.

* For China, please note that the solenoid operator is Type 87.

** Special conditions for safe use - The supply circuit shall be fitted with a fuse capable of meeting a 1500Amp short circuit current.

Accuracy of information
We take care to ensure that product information in this catalogue is reasonably accurate and up-to-date. However, our products are continually developed and updated so to ensure accurate and up-to-date information please refer to the product catalogue issue list on our web site or contact a member of our sales team.

When selecting a product, the applicable operating system design must be considered to ensure safe use. The products function, material compatibility, adequate ratings, correct installation, operation and maintenance are the responsibilities of the system designer and user.

Quality Assurance
All Bifold products are manufactured to a most stringent QA programme to ensure that every product will give optimum performance and reliability. We are third party certified to EN ISO 9001:2008. Functional test certificates, letter of conformity and copies of original mill certificates, providing total traceability are available on request, to BS EN 10204:3.1.8 where available. We reserve the right to make changes to the specifications and design etc, without prior notice.