

LNEE 50-160/40/P25VCS4

101880680

Operating data

Pumpe type	Single head pump	Fluid	Water, pure
No. of pumps / Reserve	1 / 0	Operating temperature t A	°C 4
Nominal flow	m ³ /h 48	pH-value at t A	7
Nominal head	m 13	Density at t A	kg/m ³ 1000
Static head	m 0	Kin. viscosity at t A	mm ² /s 1,569
Inlet pressure	kPa 9,8	Vapor pressure at t A	kPa 0,83
Environmental temperature	°C 20	Solids	0
Available system NPSH	m 0	Altitude	m 1000

Pump data

Make	Lowara	Nominal	m ³ /h ()
Speed	1/min 2900	Flow	Max- m ³ /h 50
Number of stages	1	Min-	m ³ /h 11,2
Max. casing pressure	kPa	Nominal	m
Max. working pressure	kPa 272,7	Head	at Qmax m 18,4
Head H(Q=0)	m 27	at Qmin	m 26,7
Weight	kg	Shaft power	kW ()
Impeller R	Max. mm 165	Max. shaft power	kW 3,9
	designed mm 139	Efficiency	%
	Min. mm 127	NPSH 3%	m
Suction nozzle	DN 50 PN 16 EN1092-2 (NSC-LNE)	Discharge nozzle	DN 50 PN 16 EN1092-2 (NSC-LNE)

Pump Materials

Volute casing	Cast iron
Casing cover	Cast iron
impeller	Stainless steel / AISI 316L
Stub shaft	Stainless steel / AISI 316L
Wear ring	Stainless steel / AISI 304
Impeller lock nut and washer	Stainless steel / AISI 316
Impeller key	Stainless steel / AISI 316L
Fill and drain plugs	Nickel-plated brass

Shaft Seal

Mechanical Seal	
e-NSC, e-LNE - MG1S2	Burgmann
Rotating Assembly	B-Resin impregnated carbon
Fixed Assembly	Q1-Silicon carbide
Elastomers	E - EPDM
Springs	G-AISI 316
Other Components	G-AISI 316

Motor data

Manufacturer	Lowara	Electric voltage	380 V
Specific design	IE3 Three phase surface motor		
Type	PLM112R.../340 E3	Electric current	7,8 A
Rated power	4 kW	Degree of protection	IP 55
Speed	2885 1/min	Insulation class	F
Frame size	112R	Weight	27 kg
Shaft diameter	0 mm	Colour	RAL 5010

Coupling

Manufacturer	
Series	
Type	
Frame size	
Spacer length	
Weight	
Coupling protection	

Base plate

Description	
Weight	

Remarks:

WDA Pompen BV

Hazenweg 2-2C
 NL-7556 BM Hengelo
 074-3030504
 wdamste@wdapompen.nl

Customer	Date	5-3-2018
Contact	Project	
Phone number	Project no.	
Email		

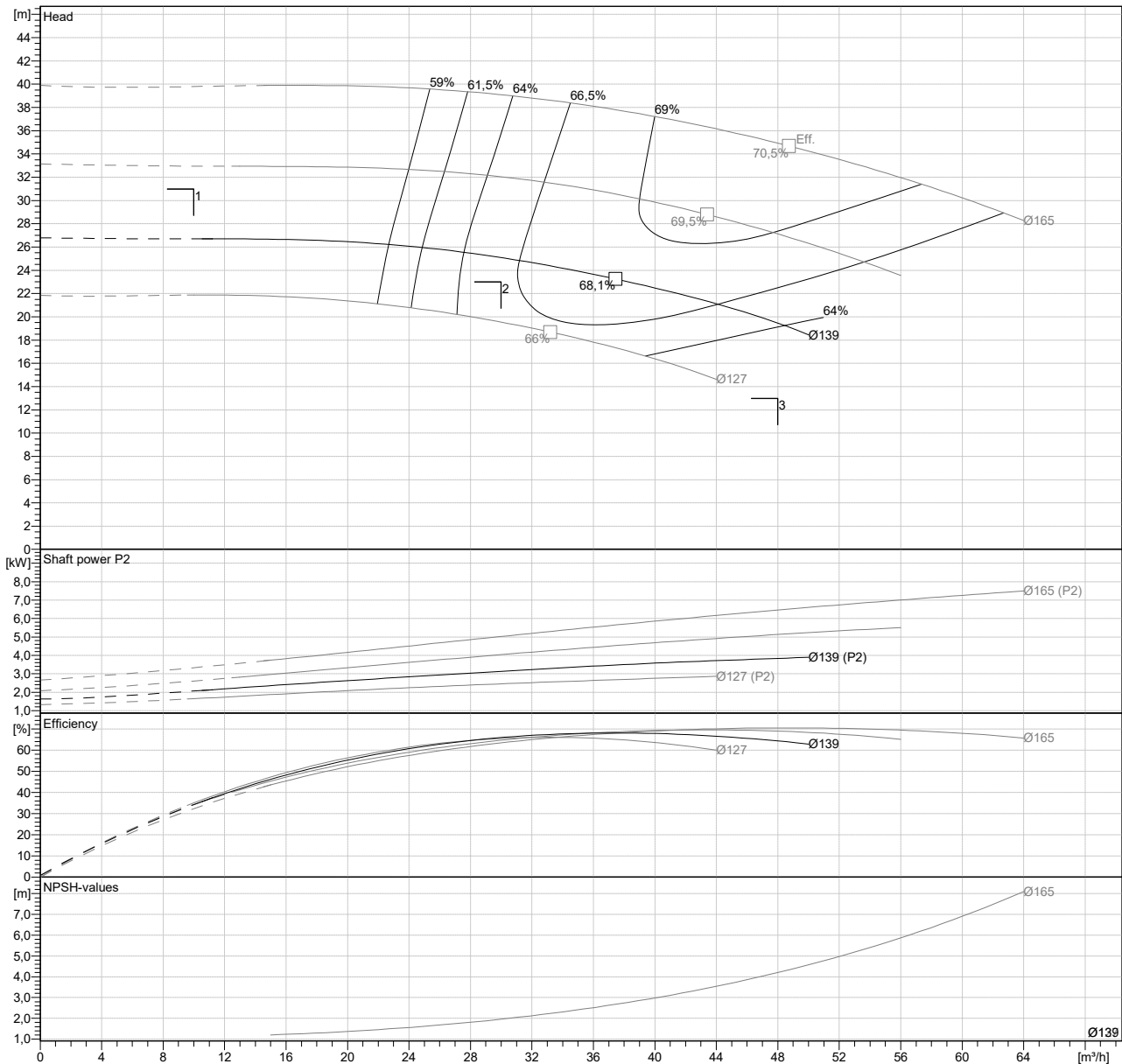
LNEE 50-160/40/P25VCS4

101880680

Hydraulic data

Operating Data Specification		Hydraulic data (duty point)		Impeller design	
Flow	48 m ³ /h	Flow		Impeller R	139 mm
Head	13 m	Head		Frequency	50 Hz
Static head	0 m	MEI >=0,4		Speed	2900 1/min

Power datas referred to:
 Water, pure [100%]; 4°C; 1000kg/m³; 1,57mm²/s
 Performance according to ISO 9906 - Annex A



WDA Pompen BV

Hazenweg 2-2C
 NL-7556 BM Hengelo
 074-3030504
 wdamste@wdapompen.nl

Customer	Date	5-3-2018
Contact	Project	
Phone number	Project no.	
Email		

LNEE 50-160/40/P25VCS4 101880680

Dimensions mm / l

AD	154		
b1	128		
Bmax	272		
DND	50		
DNS	50		
e	116		
H	340		
h1	180		
h2	160		
L	535		
p	197		
x	96		
		Total weight	51 kg

Connections mm

Suction nozzle	Discharge nozzle
DN 50	DN 50
PN 16	PN 16
EN1092-2 (NSC-LNE) / EN1092-2 (NSC-LNE)	

C	20	C	20
D	165	D	165
df	99	df	99
DN	50	DN	50
K	125	K	125
L	4 x 19	L	4 x 19

Value C, D may vary from Standard

Drawing

