

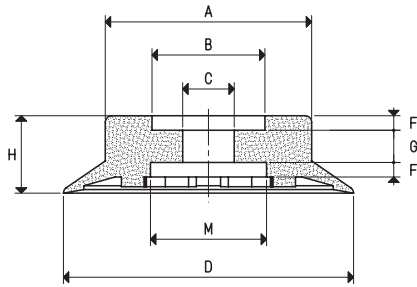
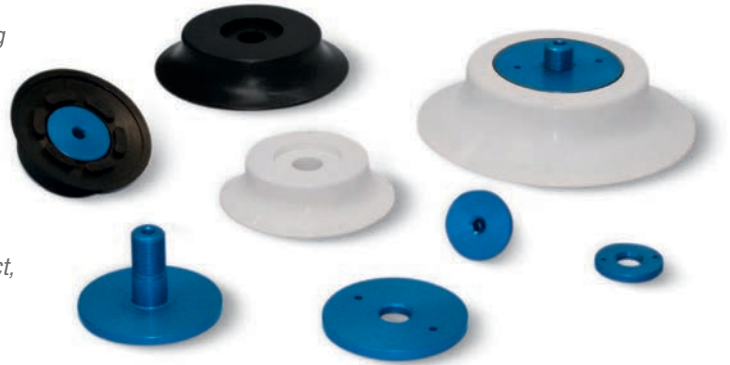
FLAT CIRCULAR CUPS WITH SUPPORT

The cups described in this page have been designed to solve most of the gripping problems that can arise handling wooden or plastic panels, thin glass or marble sheets, fragile metal sheets, ceramic or baked clay tiles, etc.

Their low, strong and slightly tilted lip does not swipe on the loading surface during the gripping phase.

The cleats on the inside of these cups, along with reducing the volume of air to be sucked, create a perfect supporting surface which prevents any gripping surface deformation as well as the vertically lifted load from slipping. These cups can be cold-assembled, with no adhesives, onto their anodised aluminium support and locked by the ring nut.

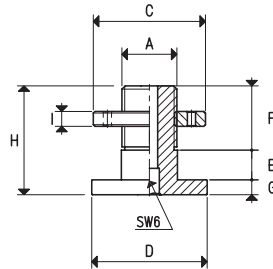
These cups are extremely easy to replace; for the spare part, in fact, all you have to do is request the cup indicated in the table in the desired compound.



CUPS

Art.	Force Kg	A Ø	B Ø	C Ø	D Ø	F	G	H	M Ø
01 76 24 *	11.33	54	35	16	76	4.5	10	24	36
01 90 24 *	15.89	64	35	16	90	4.5	10	24	36
01 110 24 *	23.74	79	35	16	110	4.5	10	24	36
01 150 36 *	45.00	98	70	16	150	6.0	17	36	70

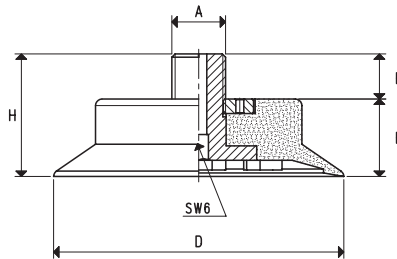
* Complete the code indicating the compound: A= oil-resistant rubber; N= natural para rubber; S= silicon



SUPPORTS

Art.	A Ø	C Ø	D Ø	E	F	G	H	I	Support/ring nut material	Cup art.	Weight g
00 08 108	G1/4"	34	35	9	19.5	4.5	33.0	4.5	aluminium	01 76 24 01 90 24 01 110 24	31.2
00 08 110	G3/8"	34	35	9	19.5	4.5	33.0	4.5	aluminium	01 76 24 01 90 24 01 110 24	33.7
00 08 112	G3/8"	69	69	15	22.0	5.5	42.5	6.0	aluminium	01 150 36	132.1

Note: By ordering the support, the ring nut will be automatically provided



CUPS WITH SUPPORT

Art.	Force Kg	A Ø	D Ø	E	F	H	Cup Art.	Support Art.	Weight g
08 76 24 1/4" *	11.33	G1/4"	76	24	14	38	01 76 24	00 08 108	83.1
08 90 24 1/4" *	15.89	G1/4"	90	24	14	38	01 90 24	00 08 108	112.0
08 110 24 1/4" *	23.74	G1/4"	110	24	14	38	01 110 24	00 08 108	168.2
08 76 24 3/8" *	11.33	G3/8"	76	24	14	38	01 76 24	00 08 110	85.6
08 90 24 3/8" *	15.89	G3/8"	90	24	14	38	01 90 24	00 08 110	114.5
08 110 24 3/8" *	23.74	G3/8"	110	24	14	38	01 110 24	00 08 110	170.7
08 150 36 *	45.00	G3/8"	150	36	14	50	01 150 36	00 08 112	436.5

* Complete the code indicating the compound: A= oil-resistant rubber; N= natural para rubber; S= silicon