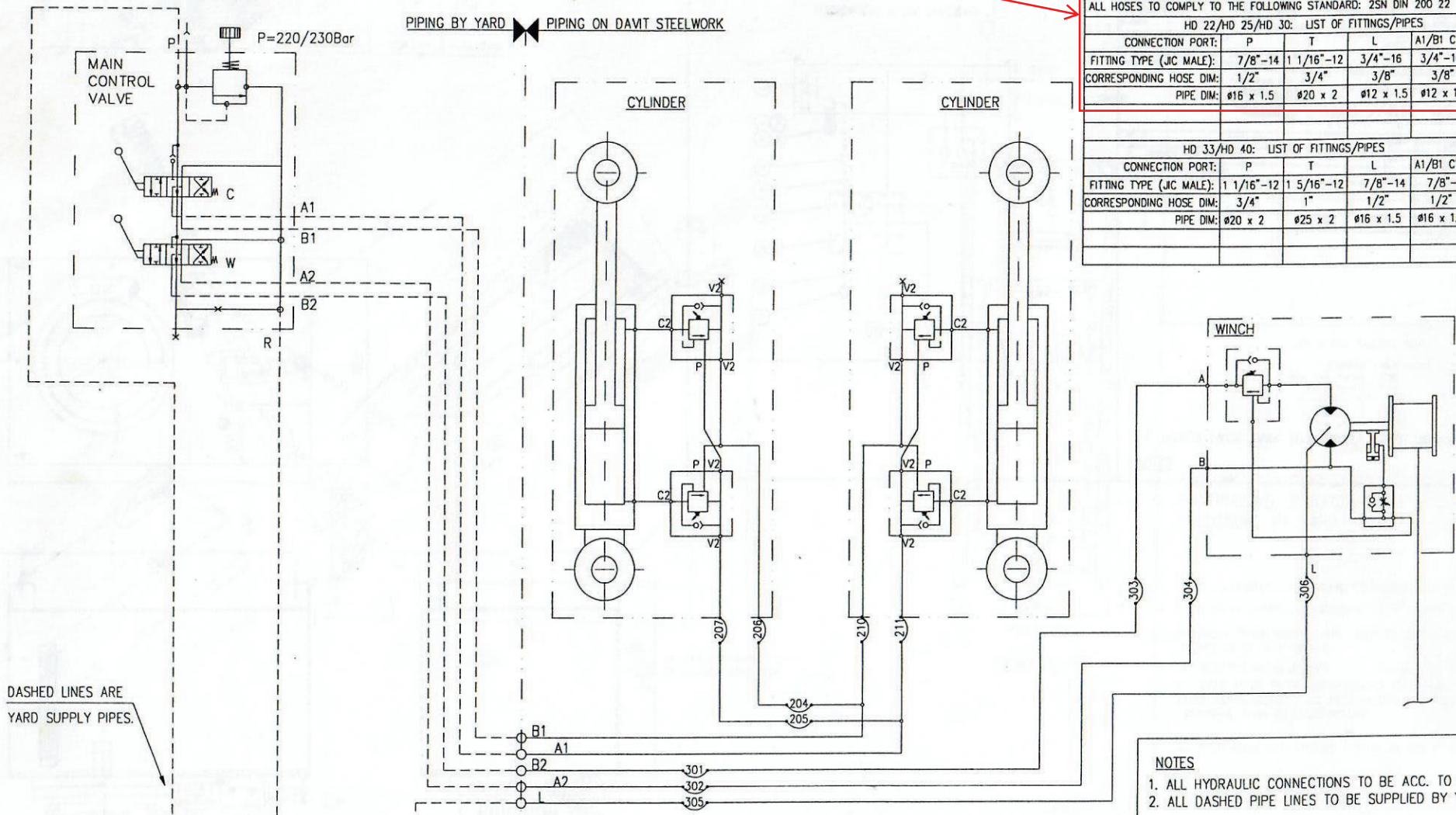


ALL FITTINGS TO BE ACC. TO SAE J 514, TRIPLE-LOCK JIC, 37.5° FLARED.
 ALL HOSES TO COMPLY TO THE FOLLOWING STANDARD: 2SN DIN 200 22

HD 22/HD 25/HD 30: LIST OF FITTINGS/PIPES					
CONNECTION PORT:	P	T	L	A1/B1 CYL.	A2/B2 WINCH
FITTING TYPE (JIC MALE):	7/8"-14	1 1/16"-12	3/4"-16	3/4"-16	7/8"-14
CORRESPONDING HOSE DIM:	1/2"	3/4"	3/8"	3/8"	1/2"
PIPE DIM:	Ø16 x 1.5	Ø20 x 2	Ø12 x 1.5	Ø12 x 1.5	Ø16 x 1.5

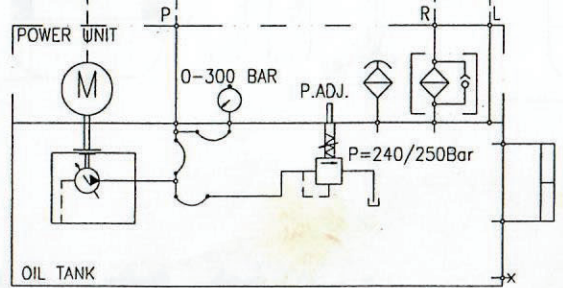
HD 33/HD 40: LIST OF FITTINGS/PIPES					
CONNECTION PORT:	P	T	L	A1/B1 CYL.	A2/B2 WINCH
FITTING TYPE (JIC MALE):	1 1/16"-12	1 5/16"-12	7/8"-14	7/8"-14	1 1/16"-12
CORRESPONDING HOSE DIM:	3/4"	1"	1/2"	1/2"	3/4"
PIPE DIM:	Ø20 x 2	Ø25 x 2	Ø16 x 1.5	Ø16 x 1.5	Ø20 x 2

PIPING BY YARD PIPING ON DAVIT STEELWORK



DASHED LINES ARE YARD SUPPLY PIPES.

EL POWER SUPPLY FROM STARTER CABINET



- NOTES**
1. ALL HYDRAULIC CONNECTIONS TO BE ACC. TO SAE J 514
 2. ALL DASHED PIPE LINES TO BE SUPPLIED BY YARD.

LEGEND	DESCRIPTION	LEGEND	DESCRIPTION
	HYDRAULIC MOTOR		HYDRAULIC FILTER
	ELECTRIC MOTOR		HYDRAULIC BREATHER/FILTER
	HYDRAULIC PUMP		CYLINDER
	BALANCE VALVE		CONTROL VALVE
	NON RETURN VALVE		LEVER OPERATOR
	HYDRAULIC HOSE		MANOMETER

0	ISSUED FOR CONSTRUCTION	NH0	14/10-97
ISSUE No.	REASON FOR ISSUE	Drawn	Checked
 P.O. Box 115, N-4818 FÅRVIK, NORWAY		TITLE HYDRAULIC OPERATED DAVITS FOR FREE FALL LIFEBOATS HYDRAULIC FLOW DIAGRAM	
		Drawing size A1	SCALE 1:1
Project STANDARD	DWG file HD-GT-00	DRAWING No. HD-GT-00	